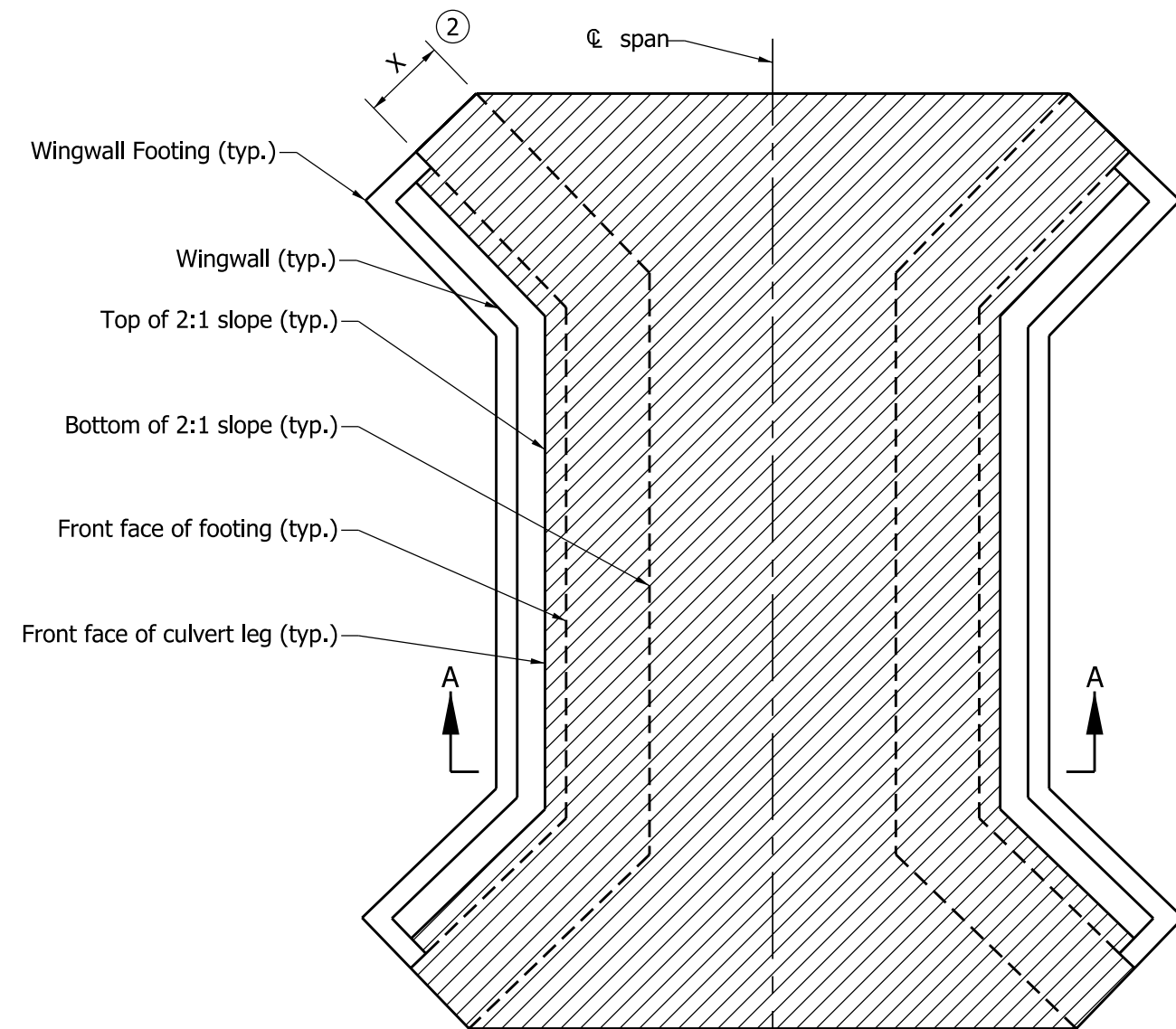


NOTES:

1. See Standard Drawing E 723-CCSP-02 for Section A-A.
- ② Distance X is equal to two times the sump depth shown on plans.

LEGEND:

 Riprap on geotextiles as shown on the plans.



RIPRAP METHOD
PLAN - WITH WINGWALLS

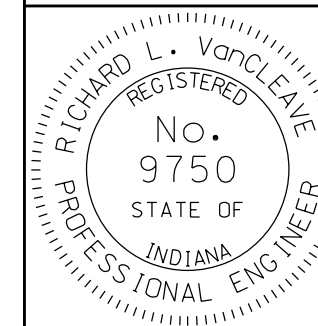
INDIANA DEPARTMENT OF TRANSPORTATION

THREE-SIDED CONCRETE CULVERT
SCOUR PROTECTION

10'-0" ≤ SPAN WIDTH < 20'-0"

SEPTEMBER 2011

STANDARD DRAWING NO. E 723-CCSP-01



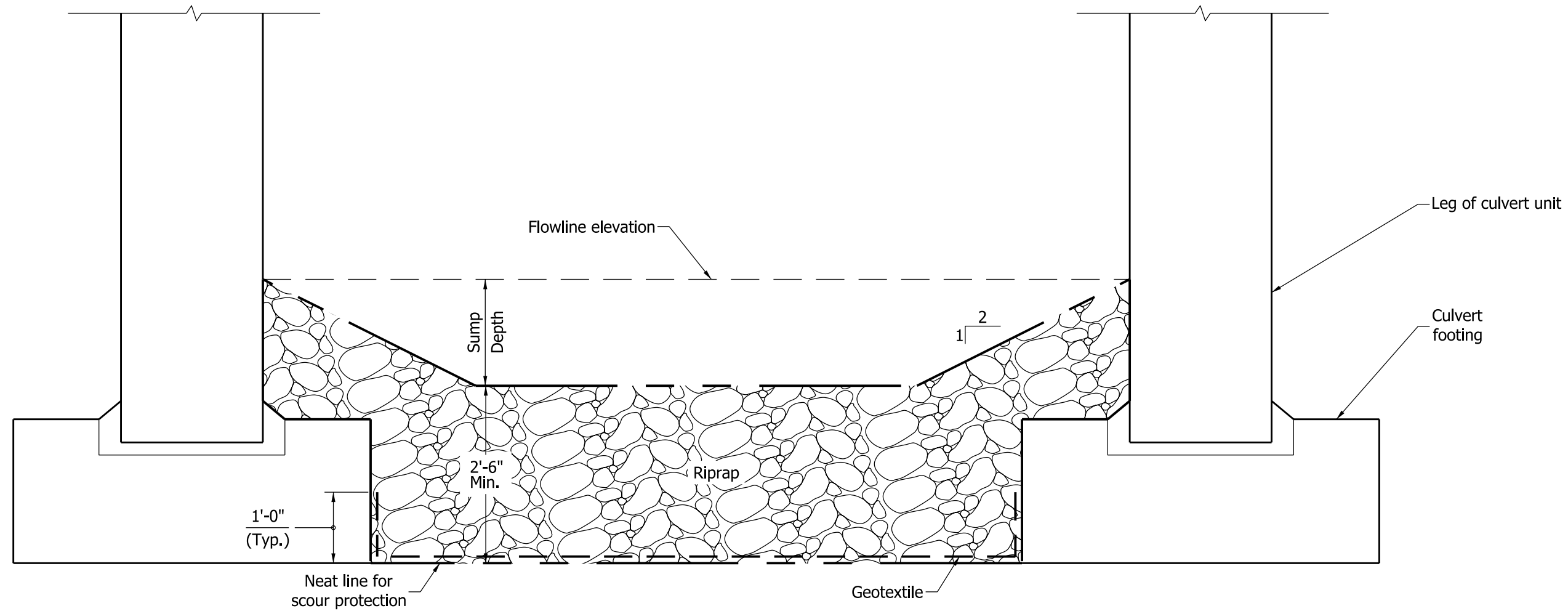
/s/ Richard L. VanCleave 09/01/11
DESIGN STANDARDS ENGINEER DATE

/s/ Mark A. Miller 09/01/11
CHIEF HIGHWAY ENGINEER DATE

DESIGN STANDARDS ENGINEER

NOTES:

1. See Standard Drawing E 723-CCSP-01 for plan view of Section A-A.



SECTION A-A
RIPRAP METHOD

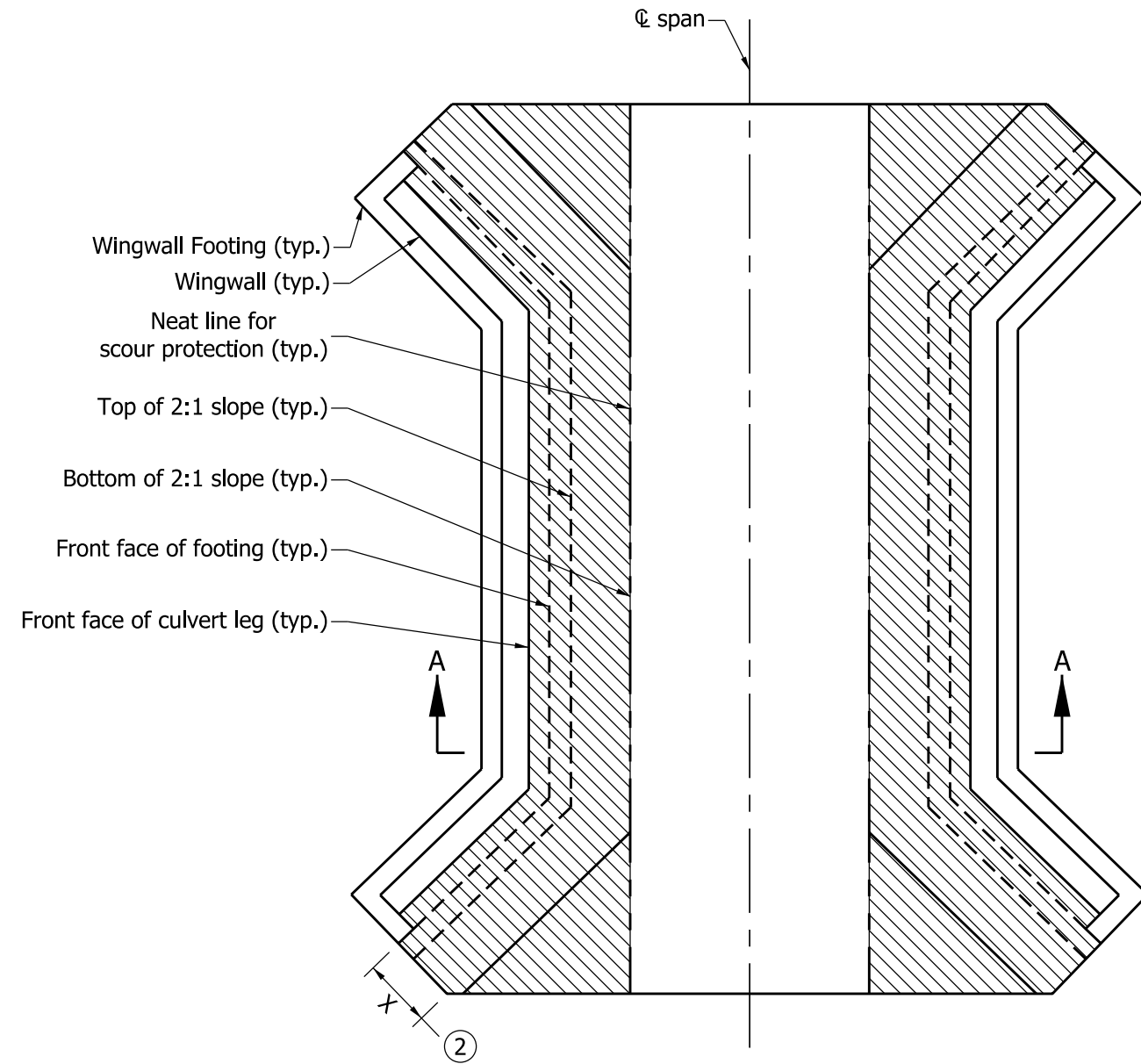
INDIANA DEPARTMENT OF TRANSPORTATION	
THREE-SIDED CONCRETE CULVERT SCOUR PROTECTION, SECTION, 10'-0" ≤ SPAN WIDTH < 20'-0"	
SEPTEMBER 2011	
STANDARD DRAWING NO.	E 723-CCSP-02
	/s/ <i>Richard L. VanCleave</i> 09/01/11 DESIGN STANDARDS ENGINEER DATE
	/s/ <i>Mark A. Miller</i> 09/01/11 CHIEF HIGHWAY ENGINEER DATE
DESIGN STANDARDS ENGINEER	

NOTES:

1. See Standard Drawing E723-CCSP-04 for Section A-A.
- ② Distance X is equal to two times the sump depth shown on the plans or 6'-0", whichever is greater.

LEGEND:

 Riprap on geotextiles as shown on the plans.

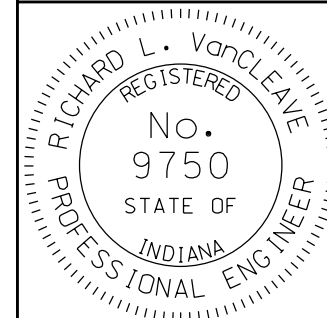


PLAN - WITH WINGWALLS
RIPRAP METHOD

INDIANA DEPARTMENT OF TRANSPORTATION

THREE-SIDED CONCRETE STRUCTURE
SCOUR PROTECTION, PLAN,
SPAN WIDTH \geq 20'-0"
SEPTEMBER 2011

STANDARD DRAWING NO. E 723-CCSP-03



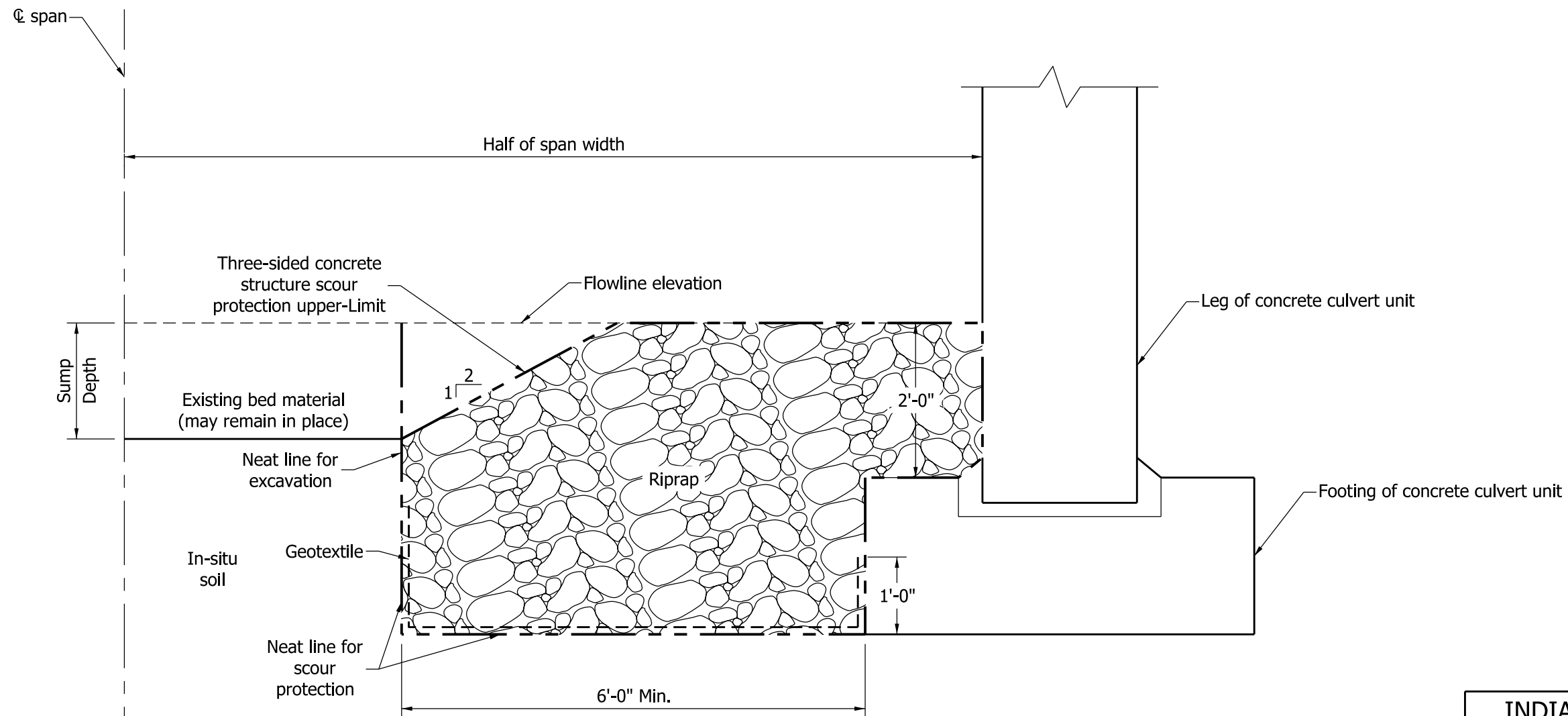
/s/ Richard L. VanCleave 09/01/11
DESIGN STANDARDS ENGINEER DATE

/s/ Mark A. Miller 09/01/11
CHIEF HIGHWAY ENGINEER DATE

DESIGN STANDARDS ENGINEER

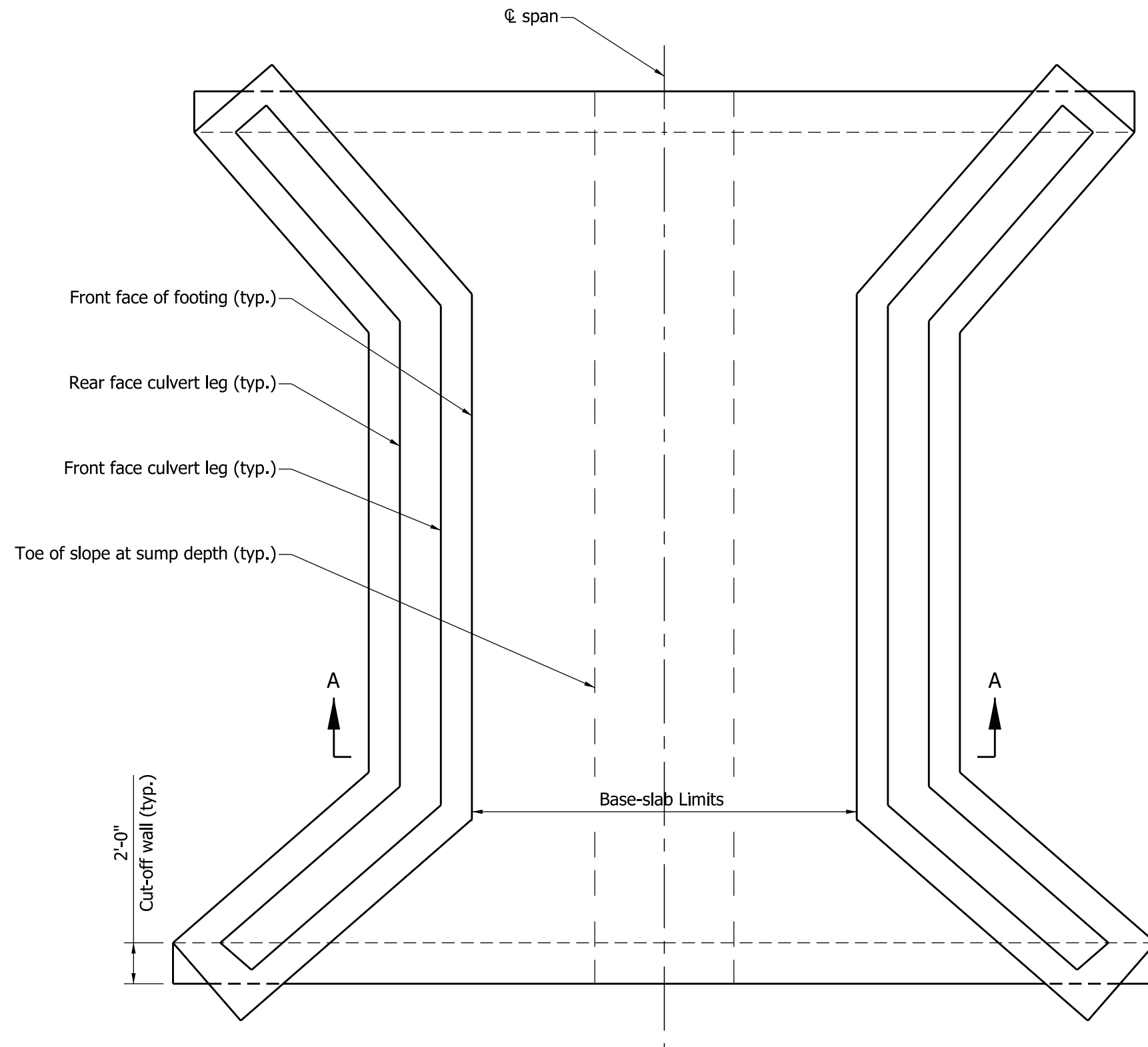
NOTES:

1. See Standard Drawing E 723-CCSP-03 for plan view of Section A-A.



SECTION A-A
RIPRAP METHOD

INDIANA DEPARTMENT OF TRANSPORTATION	
THREE-SIDED CONCRETE STRUCTURE SCOUR PROTECTION, SECTION, SPAN WIDTH \geq 20'-0"	
SEPTEMBER 2011	
STANDARD DRAWING NO.	E 723-CCSP-04
	/s/ <i>Richard L. VanCleave</i> 09/01/11
	DESIGN STANDARDS ENGINEER DATE
DESIGN STANDARDS ENGINEER	/s/ <i>Mark A. Miller</i> 09/01/11
	CHIEF HIGHWAY ENGINEER DATE



PLAN - WITH WINGWALLS
BASE SLAB METHOD

NOTES:

1. See Standard Drawing E 723-CCSP-06 for Section A-A.

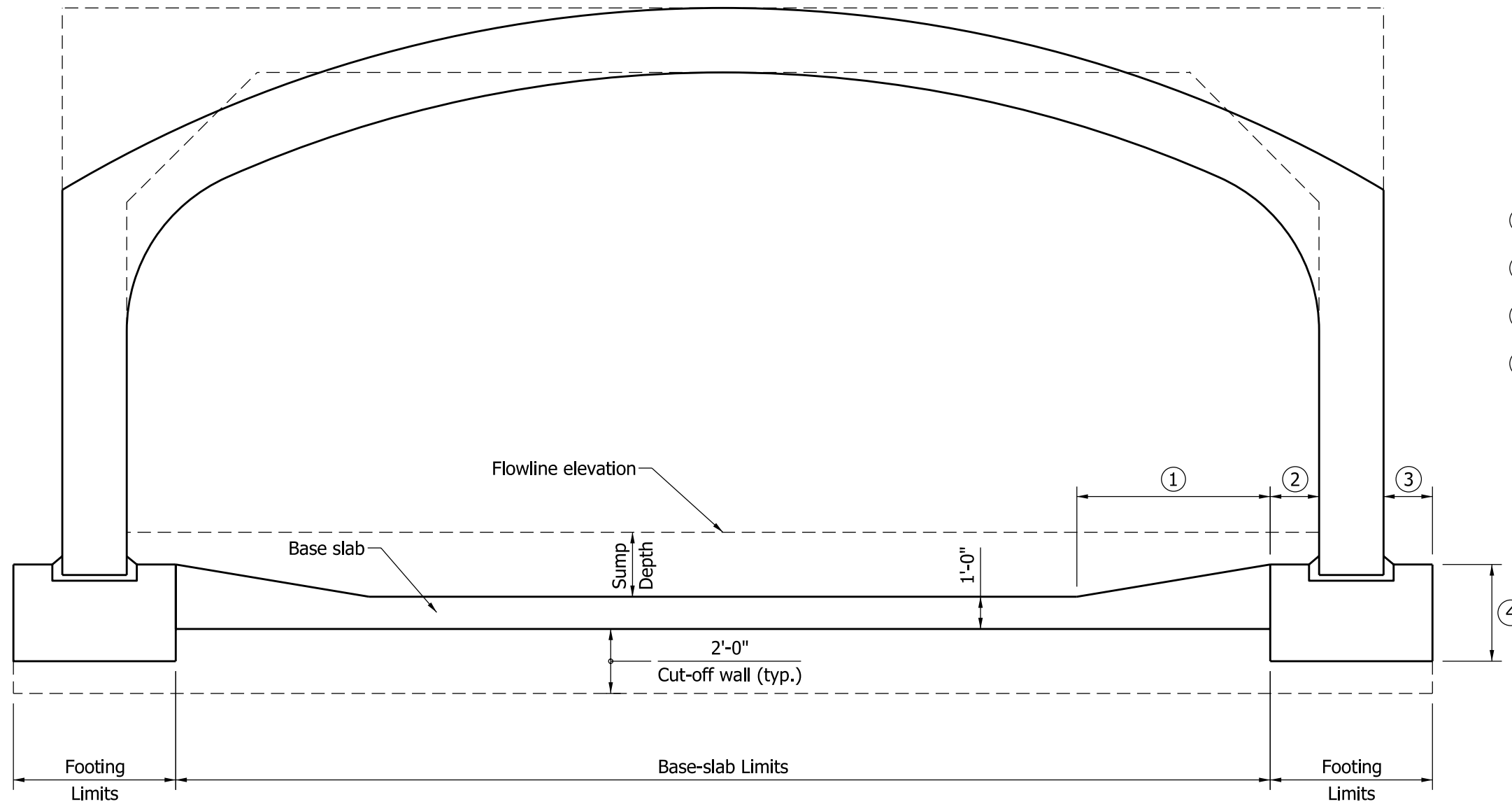
INDIANA DEPARTMENT OF TRANSPORTATION		
THREE-SIDED CONCRETE CULVERT SCOUR PROTECTION, PLAN, BASE-SLAB METHOD		
SEPTEMBER 2011		
STANDARD DRAWING NO.		E 723-CCSP-05
	/s/ <i>Richard L. VanCleave</i>	09/01/11
	DESIGN STANDARDS ENGINEER	DATE
DESIGN STANDARDS ENGINEER	/s/ <i>Mark A. Miller</i>	09/01/11
	CHIEF HIGHWAY ENGINEER	DATE

NOTES:

1. See the working drawings for dimension ① through ④.
2. See Standard Drawing E 723-CCSP-05 for plan view of Section A-A

LEGEND:

- ① Taper length
- ② Inside-footing width
- ③ Outside-footing width
- ④ Footing depth



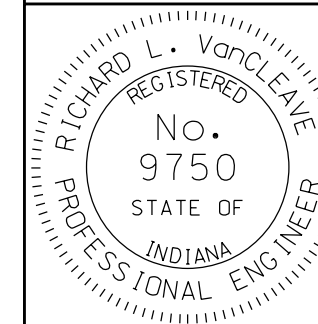
SECTION A-A
BASE SLAB METHOD

INDIANA DEPARTMENT OF TRANSPORTATION

THREE-SIDED CONCRETE CULVERT
SCOUR PROTECTION, SECTION,
BASE-SLAB METHOD

SEPTEMBER 2011

STANDARD DRAWING NO. E 723-CCSP-06



/s/ Richard L. VanCleave 09/01/11
DESIGN STANDARDS ENGINEER DATE

/s/ Mark A. Miller 09/01/11
CHIEF HIGHWAY ENGINEER DATE

DESIGN STANDARDS ENGINEER